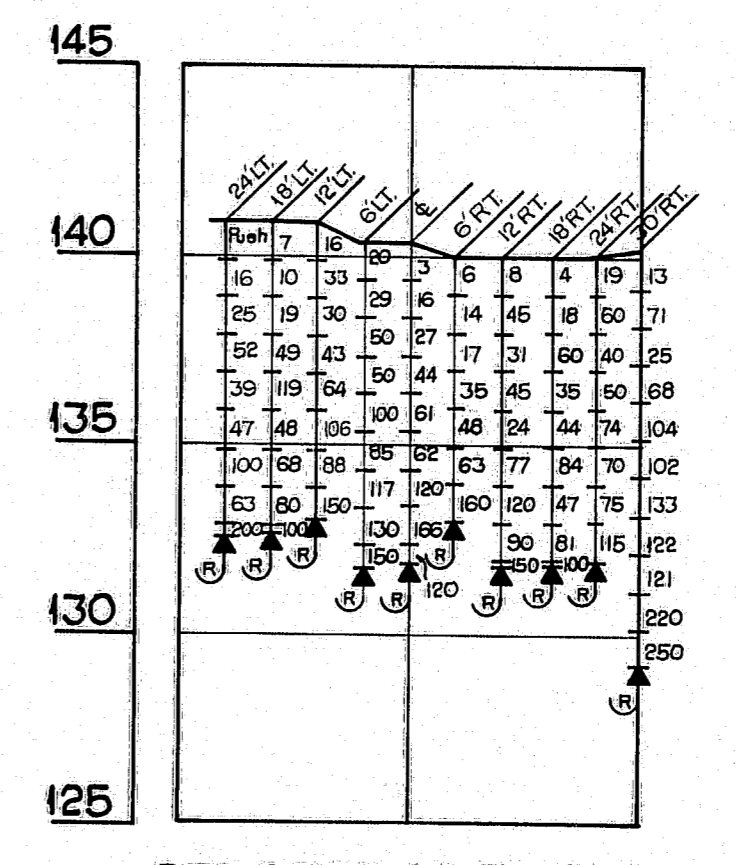
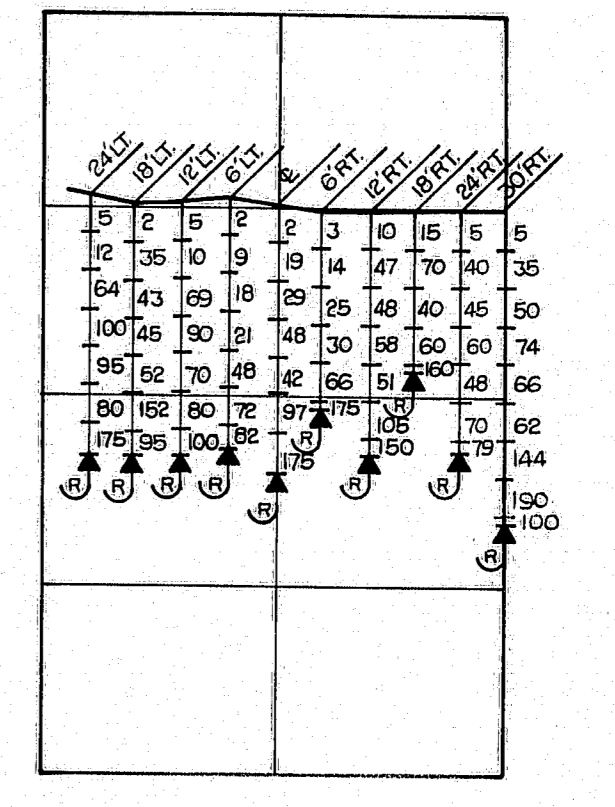


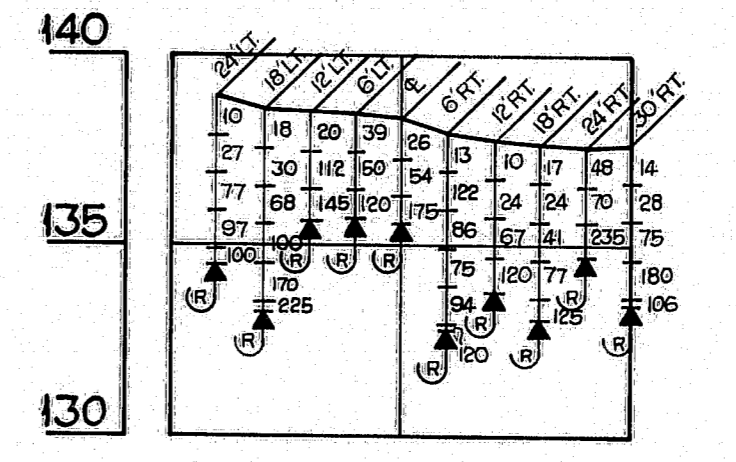
S. P. R. REG. NO.	STATE	PROJECT NUMBER	SHEET NO.	TOTAL SHEETS
1	MAINE	I 95-9(99)	43	47



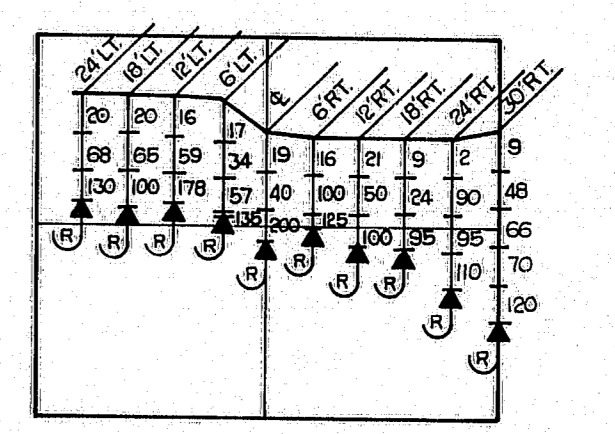
STA. 2004+69 PIER NO. 1



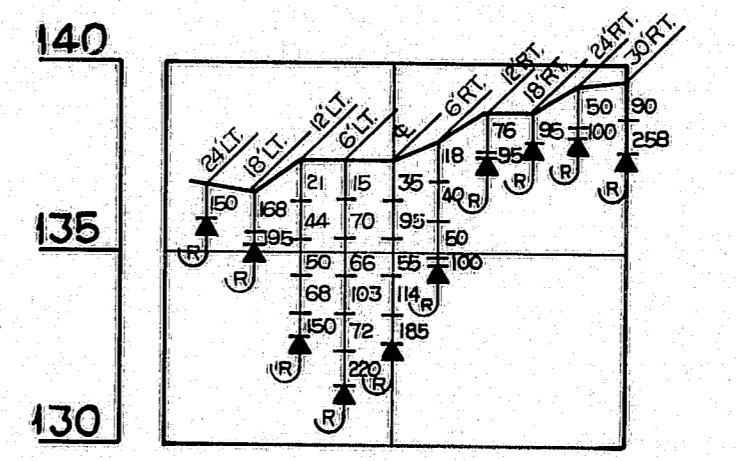
STA. 2004+81 PIER NO. 1



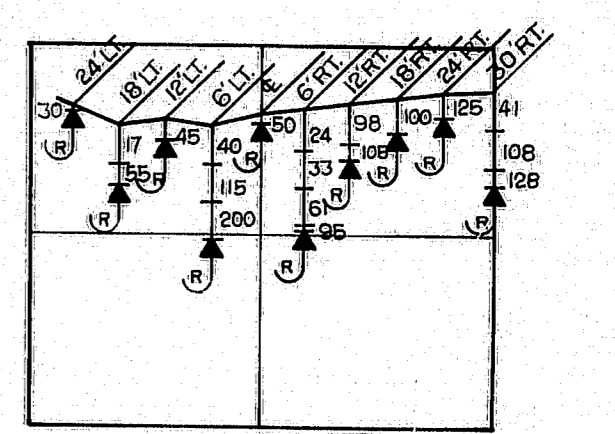
STA. 2006+19 PIER NO. 2



STA. 2006+31 PIER NO. 2

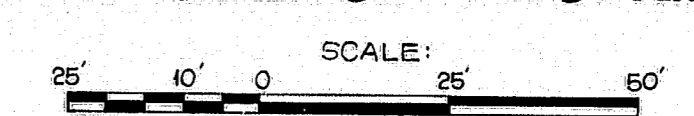


STA. 2007+69 PIER NO. 3



STA. 2007+81 PIER NO. 3

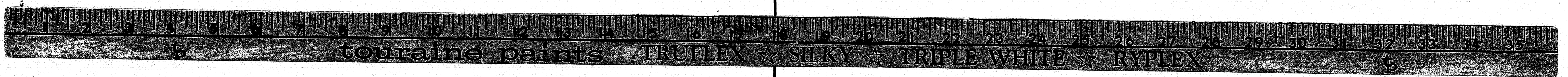
TRANSVERSE PROFILES



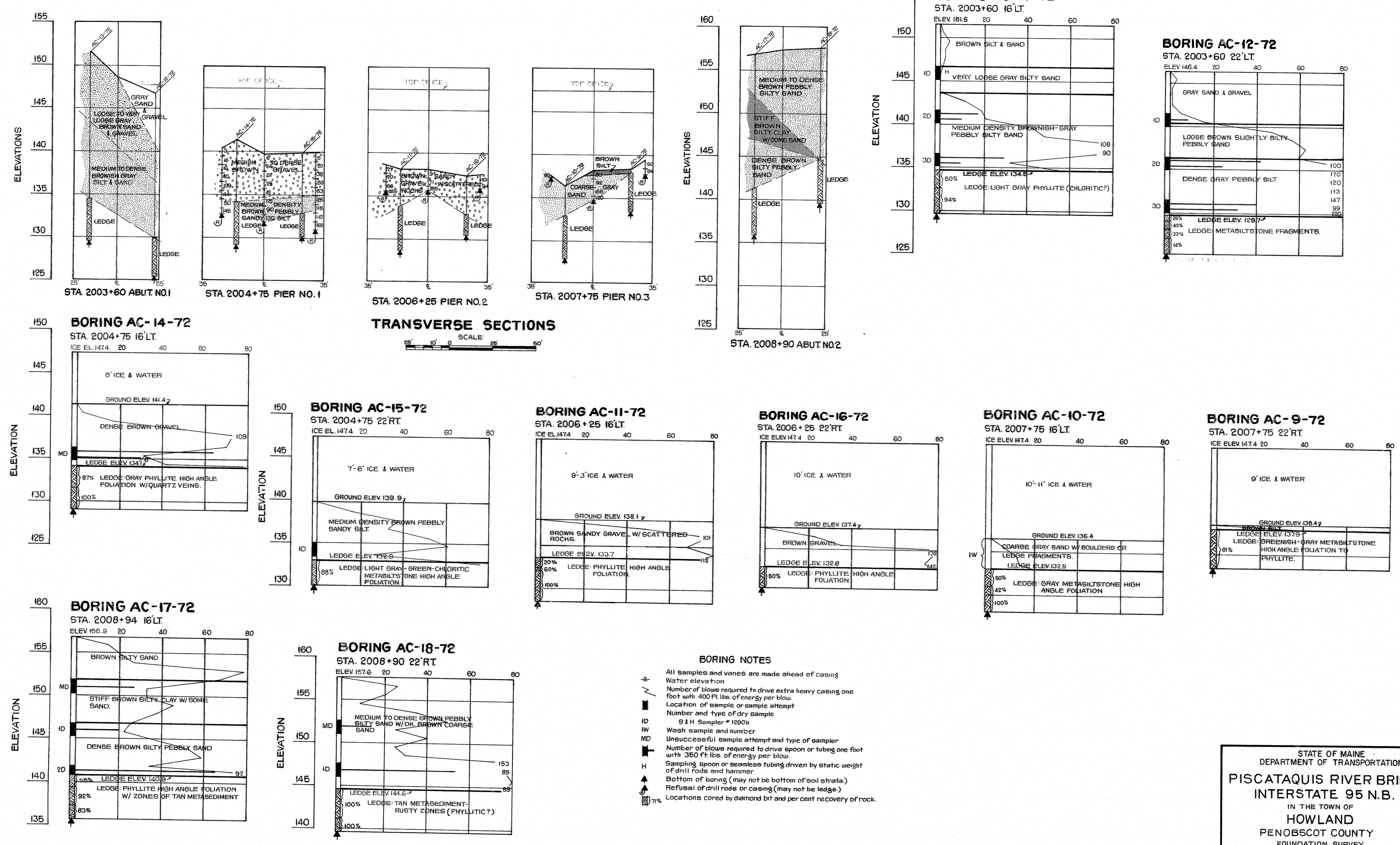
STATE OF MAINE
DEPARTMENT OF TRANSPORTATION
PISCATAQUIS RIVER BRIDGE
INTERSTATE 95 N.B.
IN THE TOWN OF
HOWLAND
PENOBSCOT COUNTY
FOUNDATION SURVEY

SHEET OF AUGUSTA, MAINE SEPT. 1973

145-105



S. P. R. REG. NO.	STATE	PROJECT NUMBER	SHEET NO.	TOTAL SHEETS
1	MAINE	195-8(99)	44	47



STATE OF MAINE
DEPARTMENT OF TRANSPORTATION
PISCATAQUIS RIVER BRIDGE
INTERSTATE 95 N.B.
IN THE TOWN OF
HOWLAND
PENOBSCOT COUNTY
FOUNDATION SURVEY

SHEET OF AUGUSTA, MAINE SEPT. 1973

145-106

